

Lounibos Fall Update

Industrial Trade Technology Department

December 29, 2020

[Program Updates](#)

[Grant Projects](#)

[Building Updates](#)

[Spring 2021 Plans](#)

[Fall 2021 Program](#)

Program Updates

Lounibos Service Center

No significant impacts or changes to the Service Center. Tera is working remotely, so the office has been mostly empty since March.

Automotive

Limited courses are running in an online capacity only. Auto 80 and Auto 194.

Instructors have been taking online training courses as available to learn new technology (Tesla, advanced driver assistance systems, etc.) and keep ASE training requirements current.

Diesel

Limited course offering in online capacity only. DET 179 only.

Instructor taking online courses with Auto instructor and working on a regional heavy duty electrical bus training program

Machine Tool

Limited course offering in online capacity only. MACH 161 and 162.

Coordinator has been working on updated shop equipment and software

Welding

No courses are offered in welding currently.

New Coordinator has been working on cleaning up shop space and grant work to modernize teaching areas.

Grant Projects

Automotive

SWP Round 4 completed and currently in process of completing round 5.

Round 4

- Headlight aimers
- Snap-On Zeus Certification kit
- Snap-On Additional hand tools for each bay
- Two HVAC Machines (total now 6, with one Hybrid and one R1234YF)

Round 5

- Alignment 4 post lifts (2) – Arrived and waiting for installation
- Engine Rebuilding and Testing equipment – Need models / quotes (Sidelined by COVID)
- Manual transmission training aids – Scheduled to arrive in January from ConsuLab.
 - Vicious coupler cutaway trainer
 - Differential cutaways
 - Clutch trainer

Diesel

SWP Round 4 Complete and Round 5 almost complete.

Round 4

- NC3 Snap-On Precision Measuring Instruments Certification – Tools arrived, and multiple instructors certified
- NC3 Snap-On Torque Certification – Tools arrived, and multiple instructors certified
- FPTI Hydrostatic Transmission Simulator with Steering trainer – Trainer arrived in February and was assembled the week before lockdown.

Round 5

- Heavy Duty Automatic transmission and clutch trainer - Scheduled to arrive in January from ConsuLab. (This will also be shared with Auto)
- Electrical system trainers: CAN bus, starter and alternator - Scheduled to arrive in January from ConsuLab. (This will also be shared with Auto)

Machine Tool

SWP Round 4 Complete and Round 5 almost complete.

Round 4

- Surface grinders: Project moved to a 3d printer and optical comparator.

Round 5

- Haas CNC Lathe with live tooling
- NC3 Snap-On Precision Measuring Instruments Certification (2 sets, 20 of each tool)

Welding

SWP Round 5 and Perkins funding – project is ongoing

- New welding booths (x12)
- New multi-purpose welders (x24+)
- New cutting tools
- Building updates to support new booths and welders

Building Updates

Just a quick photo walk through for those that have not been on campus for awhile

Dave and Rick have been keeping busy working on cleaning and organizing while we are without students.

Lounibos Service Center

No major changes in the service center. New LED lighting and motion controls. We also had the instructor office computers upgraded, not knowing COVID was going to keep us off campus.

Out front – The landscaping is holding up



Main lobby



Copy room



Please check your mail box next time you are on campus



Automotive

New LED lighting throughout. The shop spaces are disrupted due to lighting install and getting ready for lifts to be installed.

Out front



Front Storage



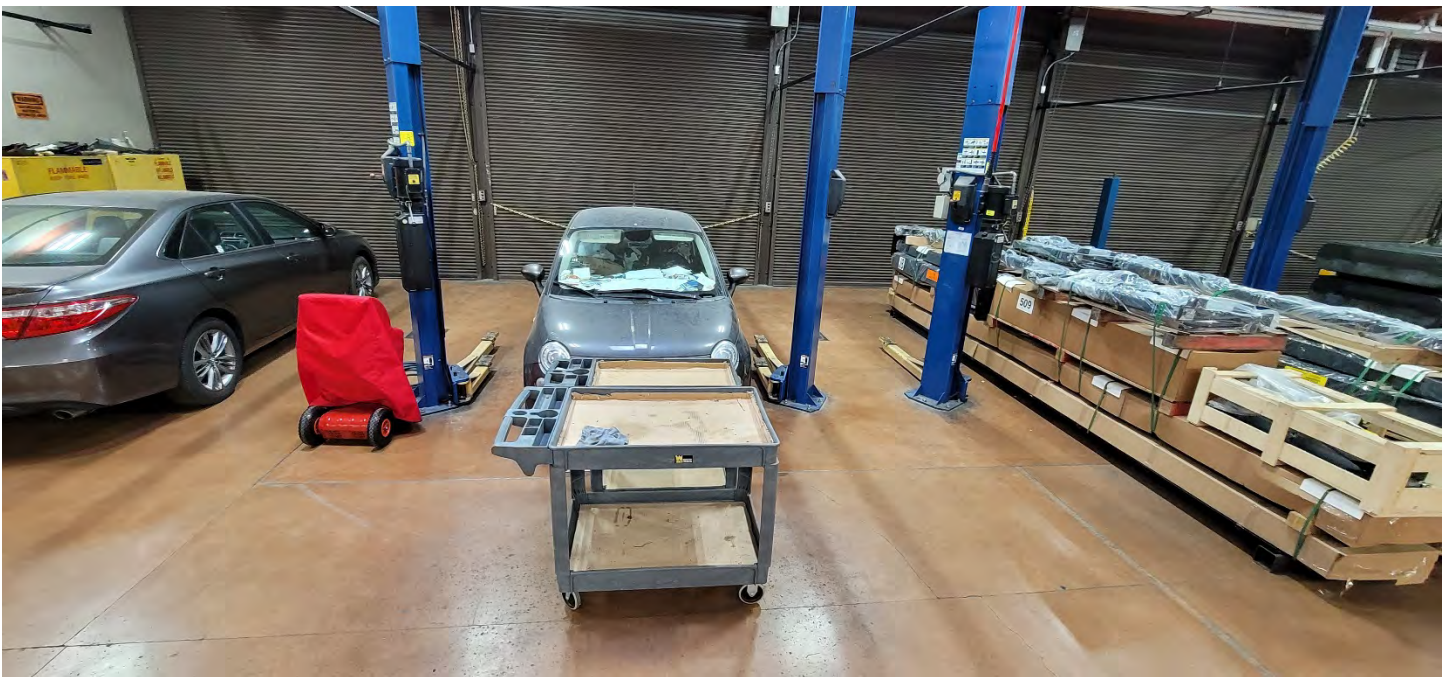
Wash Bays



New lifts have arrived

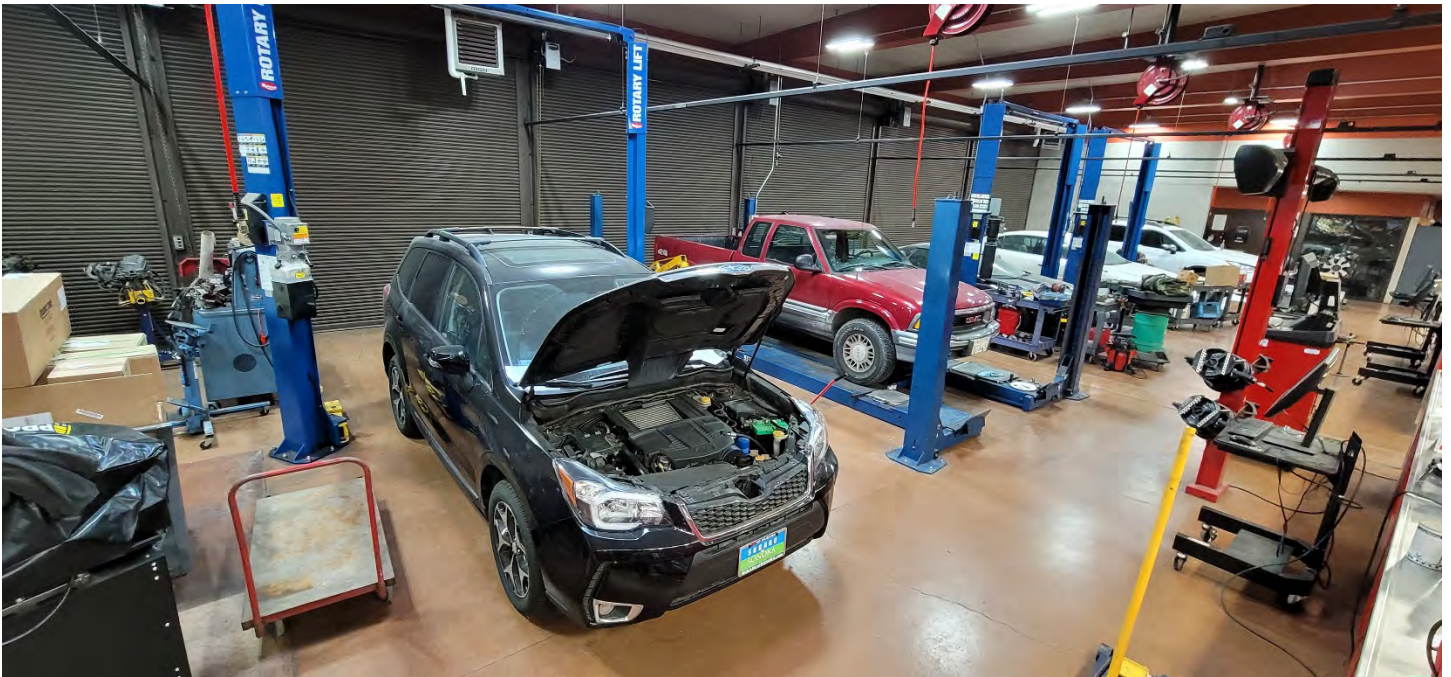
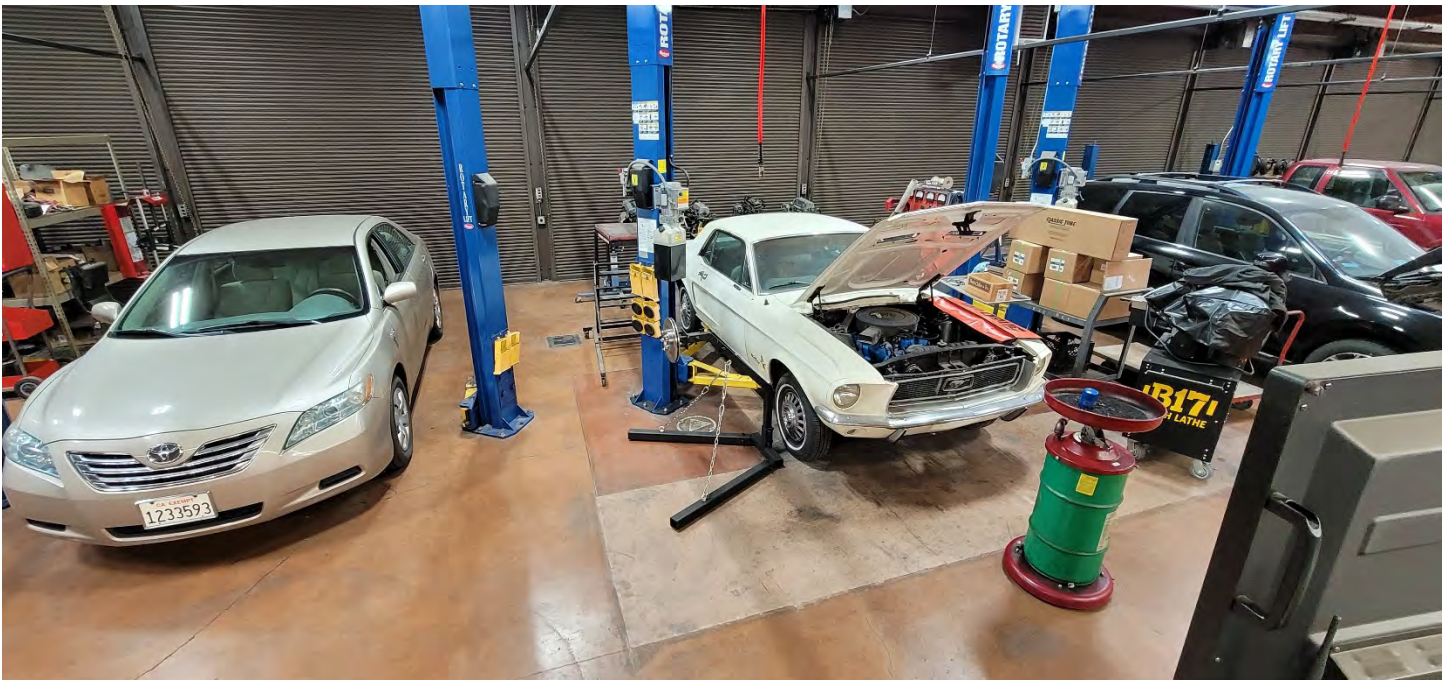


Main shop











Lecture space



Engine lab



Transmission Lab



Diesel

Most of the items in the shop are from Auto clearing space to install LED lights (Diesel was done 2 yrs ago) and prepare for lifts going in.

Classroom



Main shop







Out front

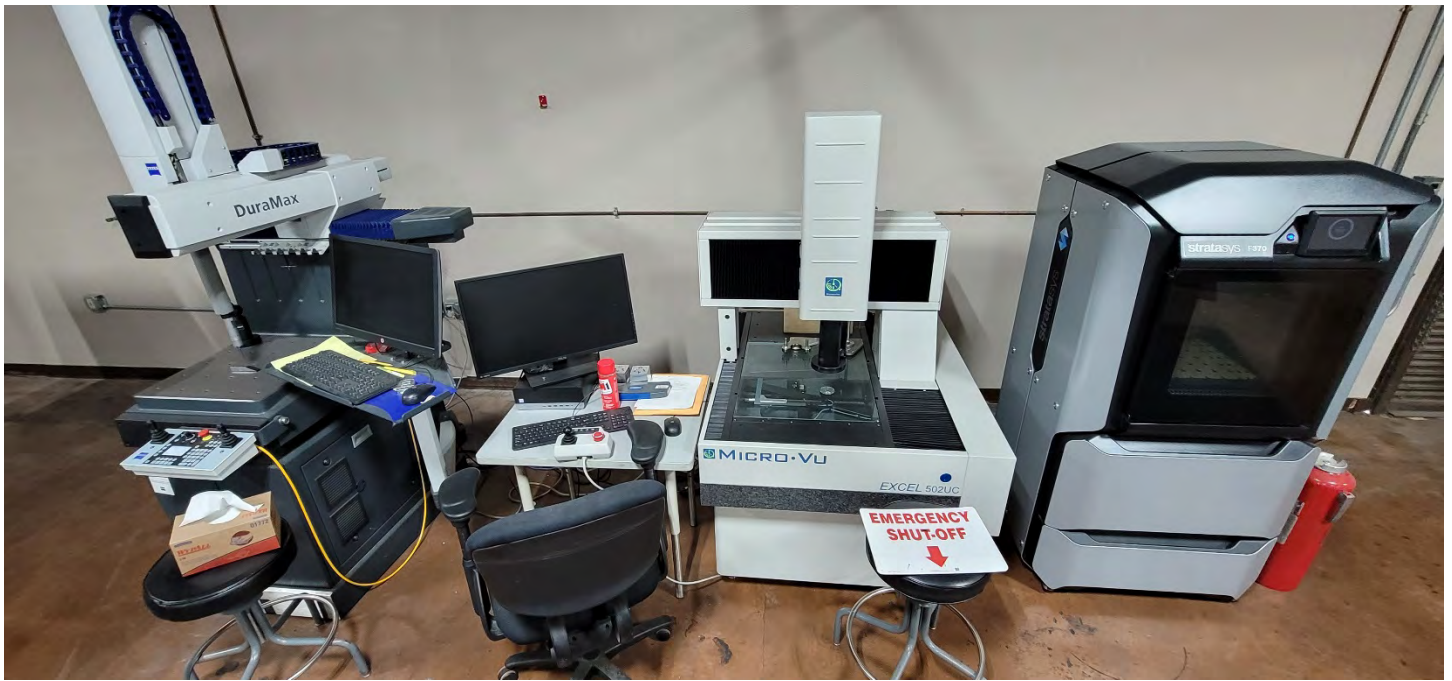


Machine Tool

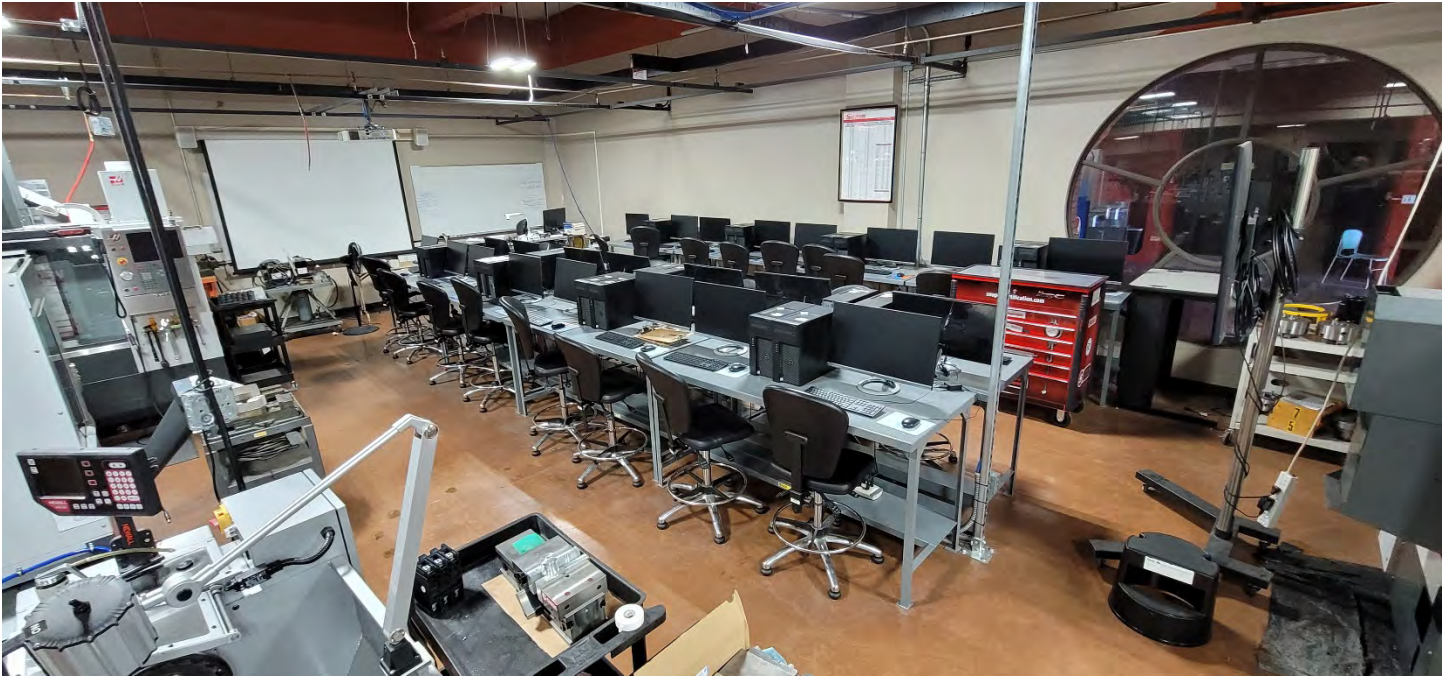
New LED lights (still working on shadow issues with contractor)

Main shop





Classroom



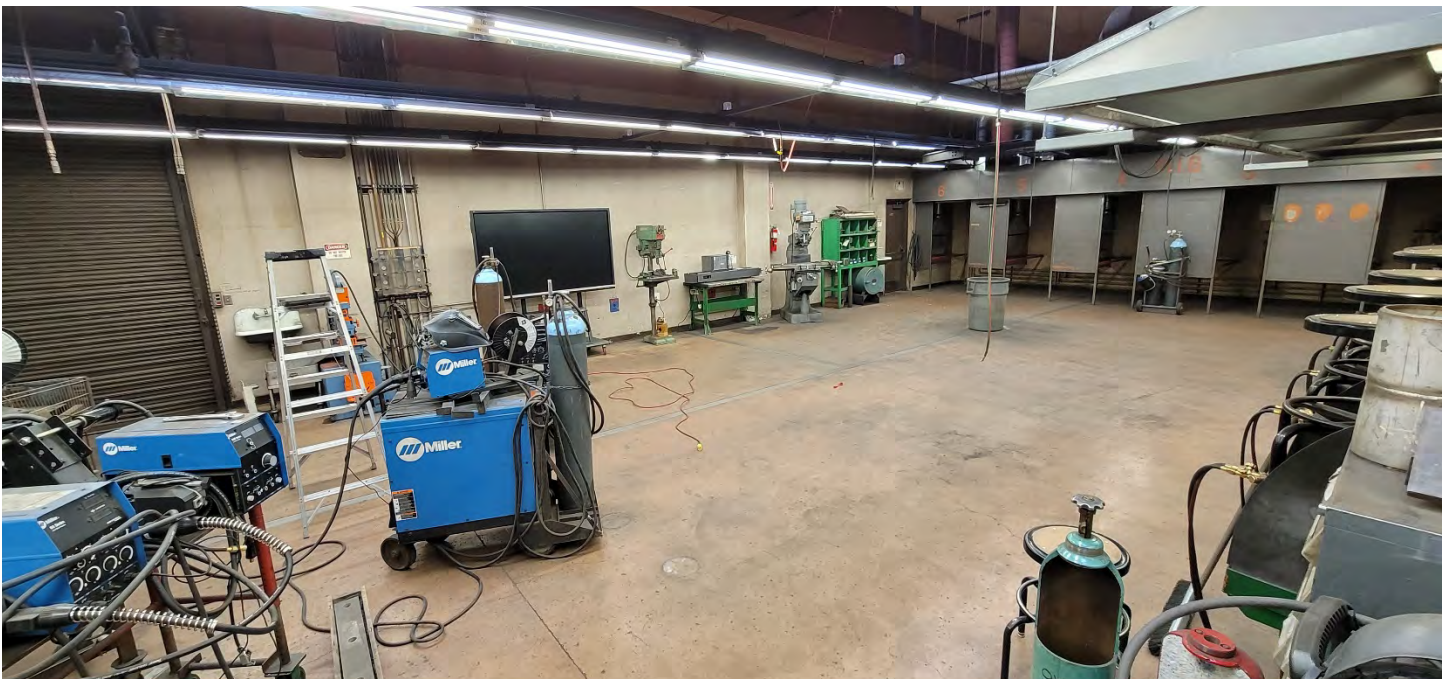
Inspection Room

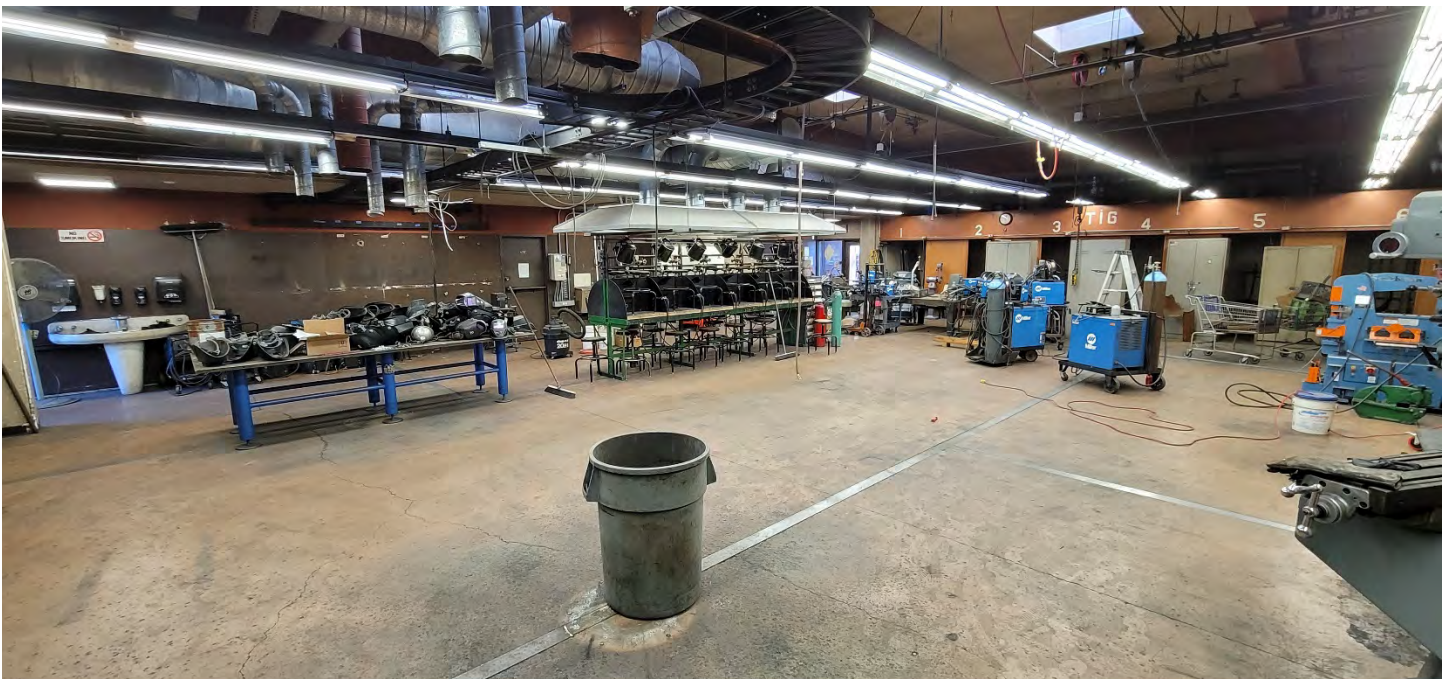
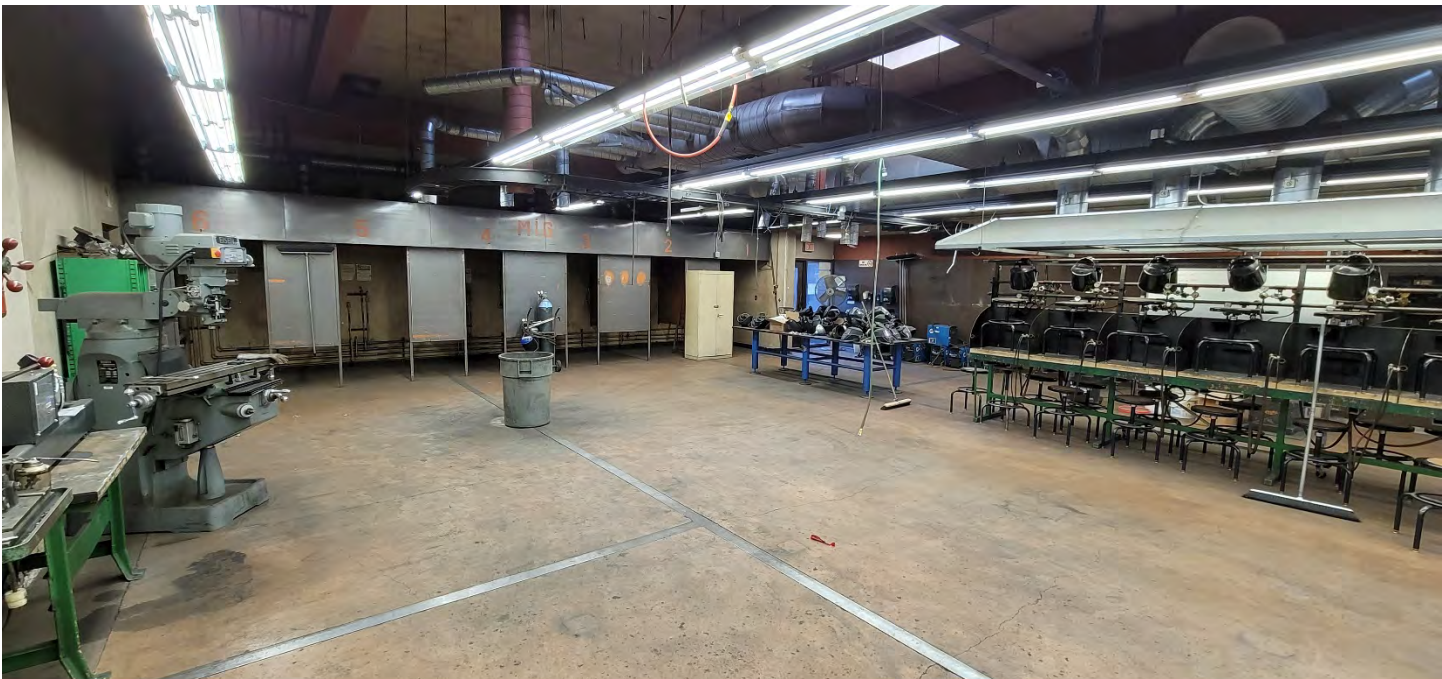


Welding

New LED lights. This has been a lot of work by Danny to sort through the 40+ years of history being saved in the welding area. Last year Eric with student help started the process and without classes going we able to hopefully complete it this Spring.

Main shop







Out back





Spring 2021 Plans

Current Enrollment Report (12/29/2020)

Course Title	Section	Days	Hours	Instructor	Location	Total Seats	Current Enrollment	Seats Remaining
AUTO 80	4237	TTh	1:30 pm - 3:00 pm	Lemmer D	Wait List	20	22	1
			Online	Lemmer D				
AUTO 80	5822	TTh	10:00 am - 11:30 am	Lemmer D	Closed	20	23	0
			Online	Lemmer D				
AUTO 194	4714	W	7:00 pm - 9:00 pm	Norton C	Open	20	19	1
			Online	Norton C				
DET 179	4029	T	6:00 pm - 8:00 pm	Kosten J	Open	22	16	6
			Online	Kosten J				
MACH 161	6091		Online	McCracken W	Closed	20	21	0
MACH 162	5516		Online	McCracken W	Open	20	18	2

Lounibos Service Center

Tera will be continue to work remotely so please email her with any questions.

Automotive

- Auto lifts are planned to install in February pending Capitol Projects processing the install bid (Snap-On CMAS)
- General shop reset after lifts installed
- Tool reorganize and inventory
- Battery chargers to be installed on every shop vehicle to reduce overall battery costs and failures
- Alignment machines to be reinstalled and updated

Diesel

- Shop reset after Auto lifts installed
- Tool room reorganize and inventory
- Back storage cage emptied out, cleaned and reset with DET training aids

Machine Tool

- Software updates
- Haas setup and testing
- Air lines replaced?
- Inventory
- Storage room emptied and reset for current courses

Welding

- The entire grant project
- Shop setup after booths are installed
- Metal prep and storage for Fall
- New course schedule
- Marketing updated program and connecting with feeder programs

Fall 2021 Program

We are currently discussing and planning for being back on Campus for Fall 2021 Semester. We also are not sure what that is going to look like, as in normal classes, reduced size classes and/or protocols.

When the Fall proof 1 is sent out please look for more information and be ready to provide input in the Spring.